

Wills, Trusts and Probate
team -
Make sure your wishes are
kept true...

CoffinMew 

Wills, Trusts and Probate team - Make sure your wishes are kept true...

We never forget that this is a very personal experience and we ensure that you are taken care of.

Protecting your assets, providing for your loved ones and making sure that your affairs are in order are all vital aspects of your life that we can help you with.

We never forget that this is a very personal experience and we ensure that your requirements are taken care of.

Coffin Mew - founded over a century ago - is now one of the larger firms in the South of England serving both the business sector and private individuals.

We are committed to offering a professional, personal and quality service tailored to individual needs.

Our service is consistently recognised by independent sources as one of the top firms in the south. Forward thinking, we have adopted modern procedures whilst keeping traditional standards.

For our clients we will always be on hand to advise on some of the major issues in your life, and help those around you when the time comes to ensure your

wishes are taken care of.

Every one of our Wills, Trusts & Probate lawyers is committed to dealing with your individual requirements sensitively, efficiently and cost-effectively.

Our Wills, Trusts & Probate services are undertaken by a centralised team located in Lakeside, but are available to all clients from any of our three offices. We often visit clients in hospitals, residential homes, their own homes, or elsewhere as appropriate.

We offer a personal, friendly and sympathetic approach assisting all our clients in planning and managing their affairs most effectively in a wide range of situations.

Our team is particularly experienced and skilled in working with the bereaved and the elderly - and take great care to explain everything in plain English, not legal jargon.

Most of our team are members of specialist professional bodies such as the Society of Trust and Estate Practitioners, Solicitors for the Elderly and

the Law Society Private Client Section

Malcolm Gibbs heads our Wills, Trusts and Probate Team and has many years' experience in all aspects of private client work. He specialises in estate and tax planning for individuals and businesses, in particular family businesses, but encompassing the full range of services for individuals, including those vulnerable, incapacitated and elderly.

We are here to help you, your family and your beneficiaries to ensure that they gain maximum benefit from your lasting wishes.

We have a number of individual leaflets that explain some of the areas of law listed in the panel opposite - which you may want to incorporate in your discussion with us.

If you would like to have copies of our information leaflets or would like to make an appointment, please contact us on 023 9236 6005 or any of the contact numbers featured in our team biographies opposite. Or you can email: wills@coffinmew.co.uk.

Our Services

- Wills, including trusts for vulnerable beneficiaries, to protect assets and property interests and to save tax
- Trusts enabling the arrangement of affairs before and after death, preserving assets for the maximum benefit of the family
- Tax planning to maximise the saving of tax by Will or lifetime gifts
- Administration of Estates of the deceased under Wills or on Intestacy
- Assistance to the Elderly in the care of their affairs and finances
- Powers of Attorney for all purposes, including Lasting Powers of Attorney which facilitate administration of clients' affairs in the event of incapacity, accident or illness
- Living Wills (Advance Decisions) allowing you to express wishes for your medical treatment in the event of a life threatening accident or illness
- Will or Inheritance Disputes where it may be necessary to challenge a Will, or its administration, or to claim against an Estate where inadequate provision has been made
- Care Home advice
- Free will, LPA and deed storage

The Team - Wills, Trusts and Probate



Malcolm Gibbs - Partner , Head of Department

Malcolm has over 28 years' experience in the full range of Private Client work, including Wills, estate and trust administration and elderly client finances. He has a particular specialism in estate and tax planning work for individuals and family businesses.

Malcolm is a member of the Society of Trust & Estate Practitioners, Solicitors for the Elderly and the Law Society Probate Section and adopts a proactive and practical approach to this work, focussing on the needs of his clients.

✉ malcolmgibbs@coffinmew.co.uk ☎ 023 9236 6045



Eddie Reynolds - Solicitor

Eddie's role in the Wealth Management team is to provide estate and tax planning advice to the firm's higher net worth clients to assist them in the management of their wealth.

A major part of his role is to liaise with the firm's corporate team to deal with the private tax affairs of business-owners and the succession issues that often arise. Eddie is a member of the Society of Trust and Estate Practitioners.

✉ eddiereynolds@coffinmew.co.uk ☎ 02380 483780



Gill Pickburn - Solicitor

Gill deals with specialist property matters including transfers of equity, declarations of trust and equity releases, in addition to wills, lasting powers of attorney and the administration of estates.

✉ gillpickburn@coffinmew.co.uk ☎ 023 9236 6047

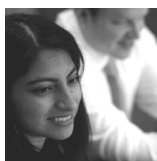


Jonathan Sleep - Associate

Jonathan is an Associate specialising in Wills, Probate and Trusts.

Jonathan works on the full range of private client matters. This includes specialist wills and trust work, administering estates, taxation and Inheritance Tax planning, and looking after the affairs of the elderly.

✉ jonathansleep@coffinmew.co.uk ☎ 023 9236 9520



Rukshana Khanom - Solicitor

Rukshana's expertise is in dealing with wills, tax planning, lasting powers of attorney, estate administration, and in particular Islamic wills.

✉ rukshanakhanom@coffinmew.co.uk ☎ 023 9238 8021



Carl Ingram - Solicitor

Carl is experienced in dealing with a wide range of private client work including wills, inheritance tax planning, lasting powers of attorney and estate administration.

Carl is a member of the Society of Trust and Estate Practitioners.

✉ carlingram@coffinmew.co.uk ☎ 023 9236 9526



Annabelle Vaughan - Solicitor

Annabelle has experience in dealing with a wide range of private client work, which includes wills, inheritance tax planning, lasting powers of attorney, estate administration, declarations of trust, Court of Protection work and personal injury trusts.

✉ annabellevaughan@coffinmew.co.uk ☎ 023 9236 9524



Robert Peach - FILEX

Robert is a Member of the Association of Contentious Trust and Probate Specialists. He has practised in all areas of civil litigation, but specialises in wills, probate and trust disputes.

He heads up the firm's Will, Probate and Trust Disputes team which has the edge in this niche area of work.

✉ robertpeach@coffinmew.co.uk ☎ 023 9236 9528

What others say about us:

Legal 500 2011

Private Client Wills Trusts

At Coffin Mew LLP, the 'highly professional and responsive' team is recommended for wealth management, trust work and shareholders' agreements, and advises various high-net-worth individuals. Malcolm Gibbs is vastly experienced.



CoffinMew

1000 Lakeside
North Harbour
Portsmouth
PO6 3EN
DX: 124493 Portsmouth 9

023 9238 8021 T
023 9221 0952 F
www.coffinmew.co.uk
wills@coffinmew.co.uk

Kings Park House,
22 Kings Park Rd
Southampton SO15 2UF
Tel: 023 8033 4661

60 Stoke Road,
Gosport
PO12 1PA
Tel: 023 9252 3111